



Always high-speed! absolutely desirable

©Copyright 2019 February All Rights Reserved Version 1.0

The information contained in this document is subject to change without notice. We make no warranty of any kind with regard to this material, including, but not limited to, the implied warranties of merchantability and fitness for a particular purpose. We shall not be liable for errors contained herein or for incidental or consequential damages in connection with the furnishing, performance, or use of this material.

This document contains proprietary information that is protected by copy right. All rights are reserved. No part of this document may be photocopied, reproduced or translated to another language without the prior written consent of the manufacturer.

TRADEMARK

Intel®, Pentium® and MMX are registered trademarks of Intel® Corporation. Microsoft® and Windows® are registered trademarks of Microsoft Corporation.

Specifications

1

Main Board

CPU

PP-8500-15 / 25

Intel Core™ i5-6200U 2.3GHz

System Memory

1x SO-DIMM (204pin) Slot, DDR3L 1333 MHz, Max 8GB

LCD Panel

PP-8500 -15 / 25

Panel Size 15"

Maximum Resolution 1024 x 768

Brightness 300 cd/m¹

Contrast Ratio 2000 : 1

Response Time 23 ms

View Angles (H/V) 168 / 168

Touch Panel Five Wires Resistive Touch or Projected Capacitive Touch

Storage

HDD 2.5" SATAIII /SATAIII interface x 2

Expansion

Socket One Mini-PCIE or One Msata II

Power

Power Adaptor Input AC 100-240V 1.6A 50/60Hz, Output DC 12V 5A

I / O

USB Four USB 3.0, Two USB 2.0

Serial Four COM ports with DB-9 Connector

COM1, COM2 ,COM3, COM4 with 0V / 5V / 12V power select (by jump)

COM3 support RS232/RS485 select (by jump)

LAN One Realtek RTL8111H

2nd VGA Output One 15 Pin VGA Port

Audio Two Earphone & Two Microphone

LPT One 25 pin LPT Port

Control/Indicator

Power Button	One
LED Indicators	Power (Red)

Optional Peripherals

Magnetic Card Reader	ISO Track 1/2/3, USB interface
VFD customer display	20 x 2 characters, RS-232 interface

Dimensions

PP-8500-15	358(W) X 70(L) X 293(H) mm
PP-8500-H15	358(W) X 223.9(L) X 309.6(H) mm

Environment

Operating Temperature	0°C ~ 40°C (32°F ~ 104°F)
Storage Temperature	- 20°C ~ 60°C (- 4°F ~ 140°F)
Operating Humidity	10% - 80% RH non condensing
Storage Humidity	10% - 80% RH non condensing

Model Number

PP-8500-X – SS
X : H --- Contain foot
SS : 15 --- 15" Five Wires Resistive Touch
25--- 15" Projected Capacitive Touch

If any item is missing, please contact your sale agent immediately.

Take the system unit out from the carton. Remove the unit by carefully holding the foam inserts and remove slowly to protect the system. The following items should be found in the carton:



1. CD that including all driver and manual



2. The System



3. Power Adaptor



4. AC Power Cord

About Your System

3

Please unplug the AC power of the adapter before opening any part of the system. Since the standby power is always on after the adapter is plugged in. It may cause permanent damage to your system when you open any part of it.

Front View



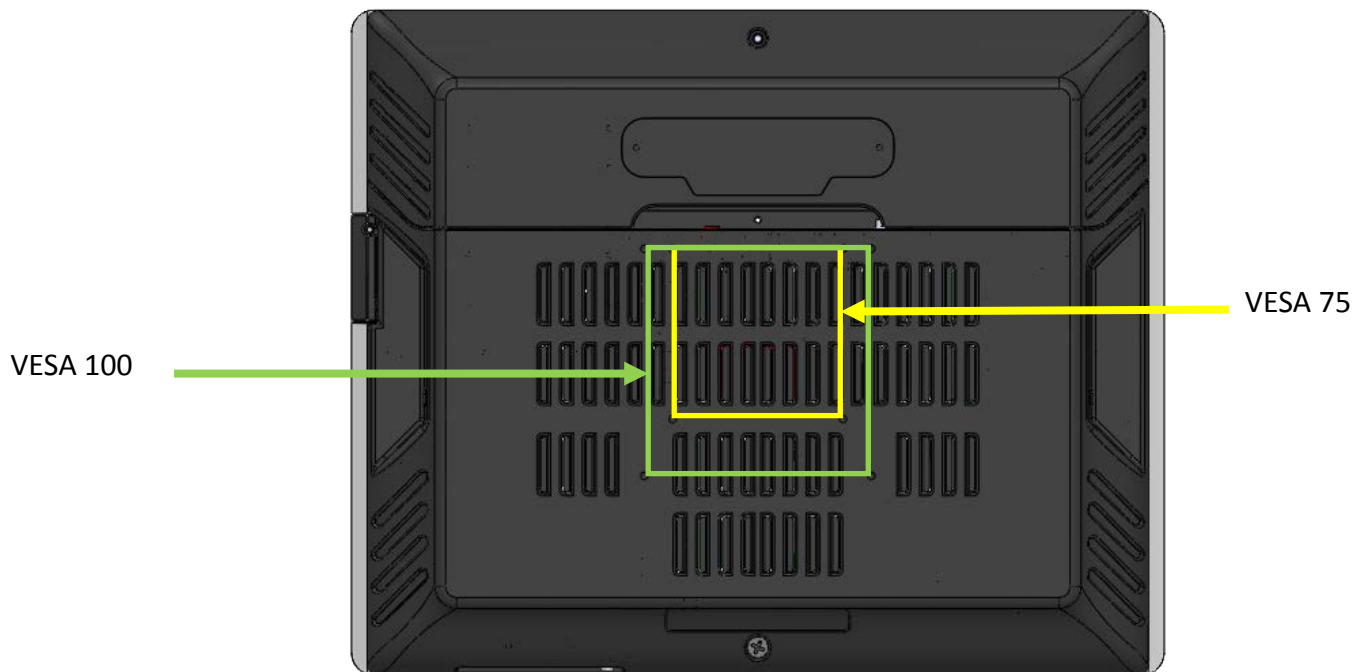
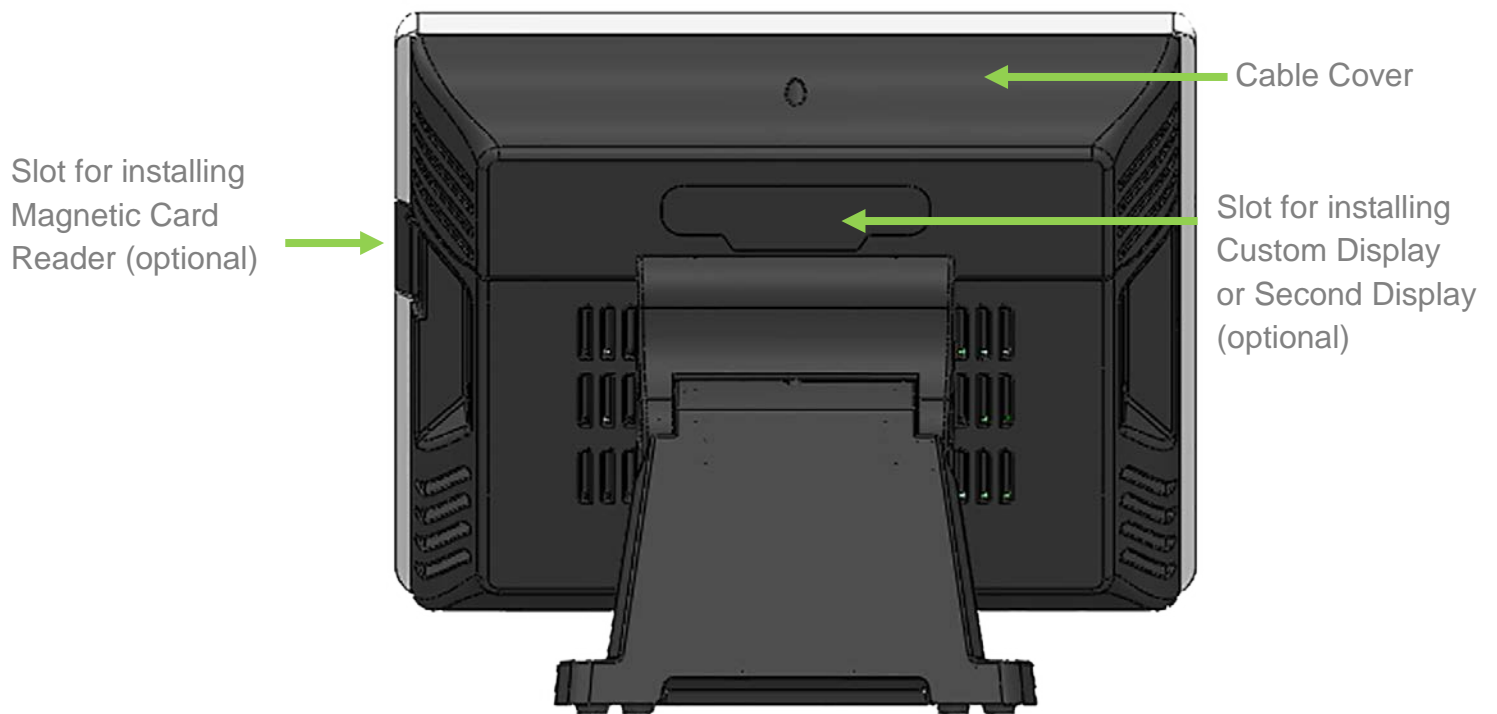
Power
Button

Microphone

Earphone

USB 2.0

Rear View



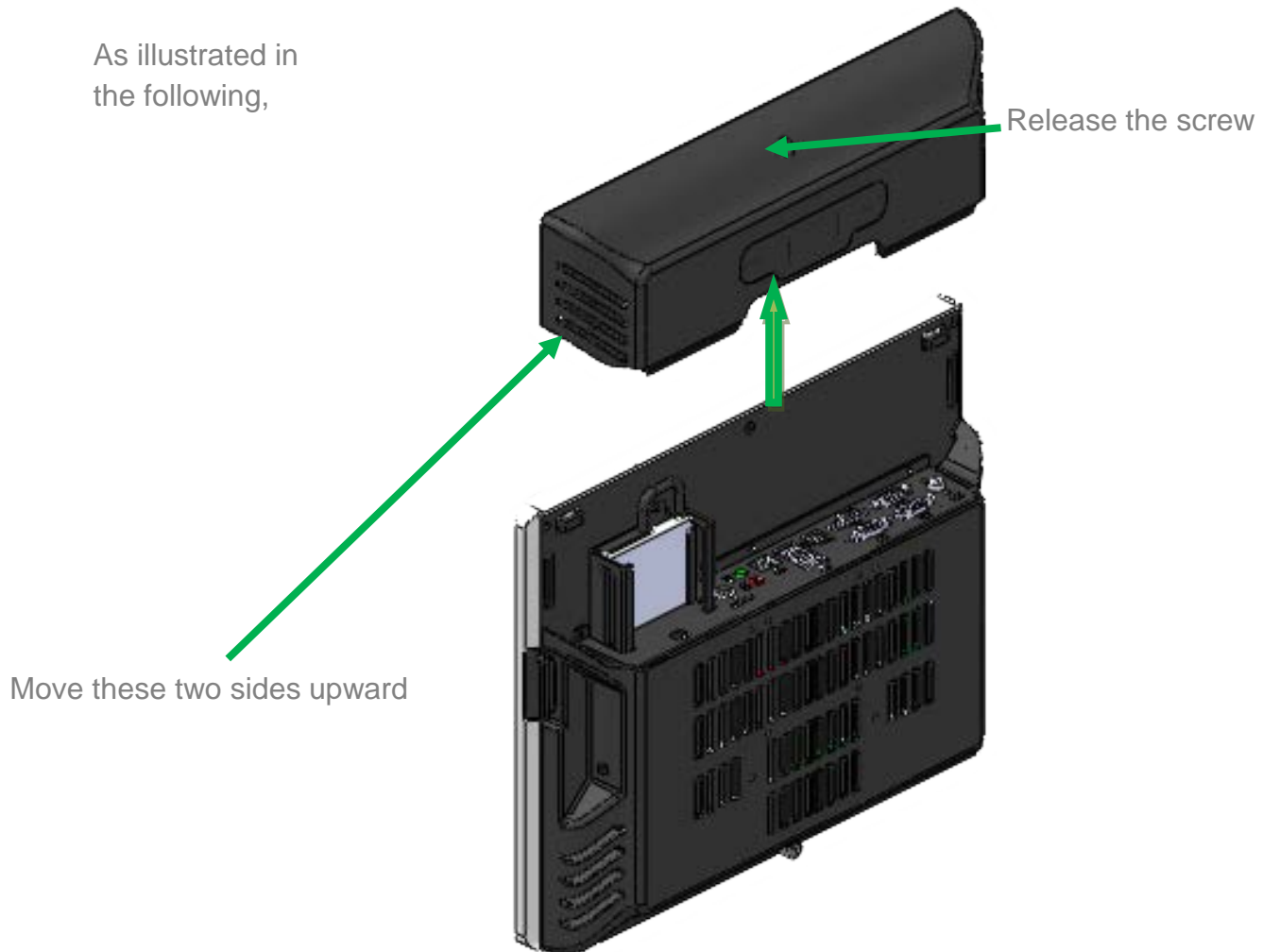
How to open the connector bezel

Please unplug the AC power of the adapter before opening any part of the system.

Since the standby power is always on after the adapter is plugged in.

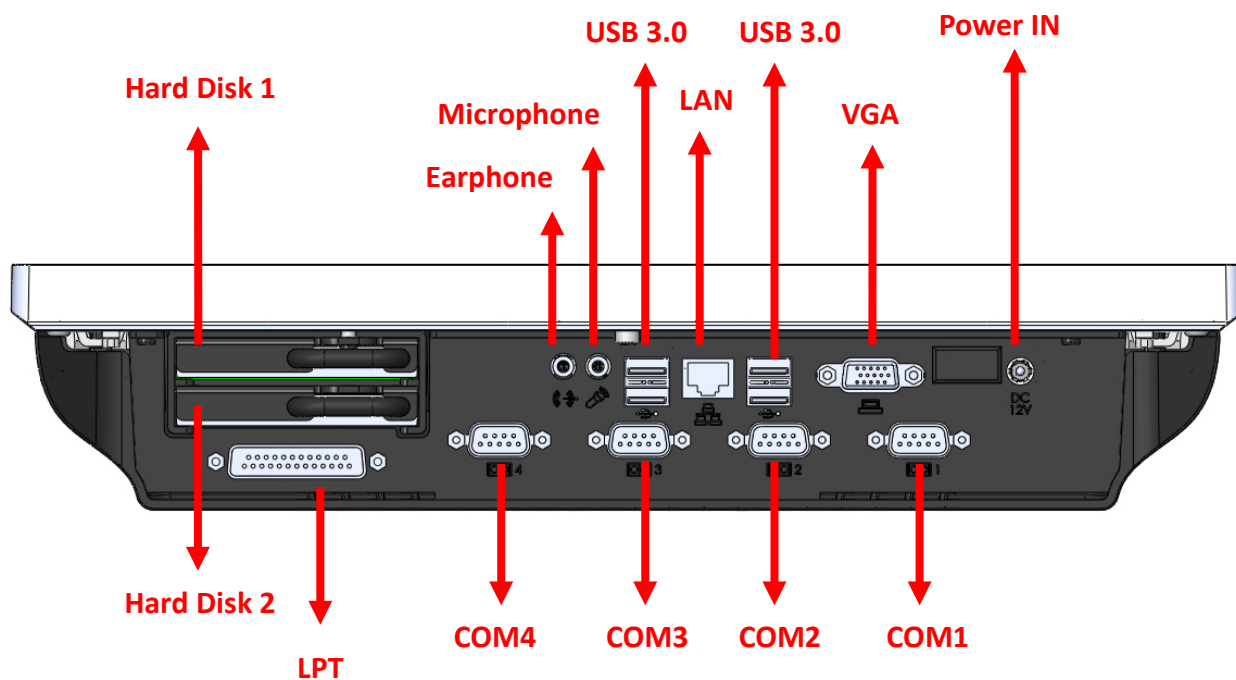
It may cause permanent damage to your system when you open any part of it.

As illustrated in
the following,

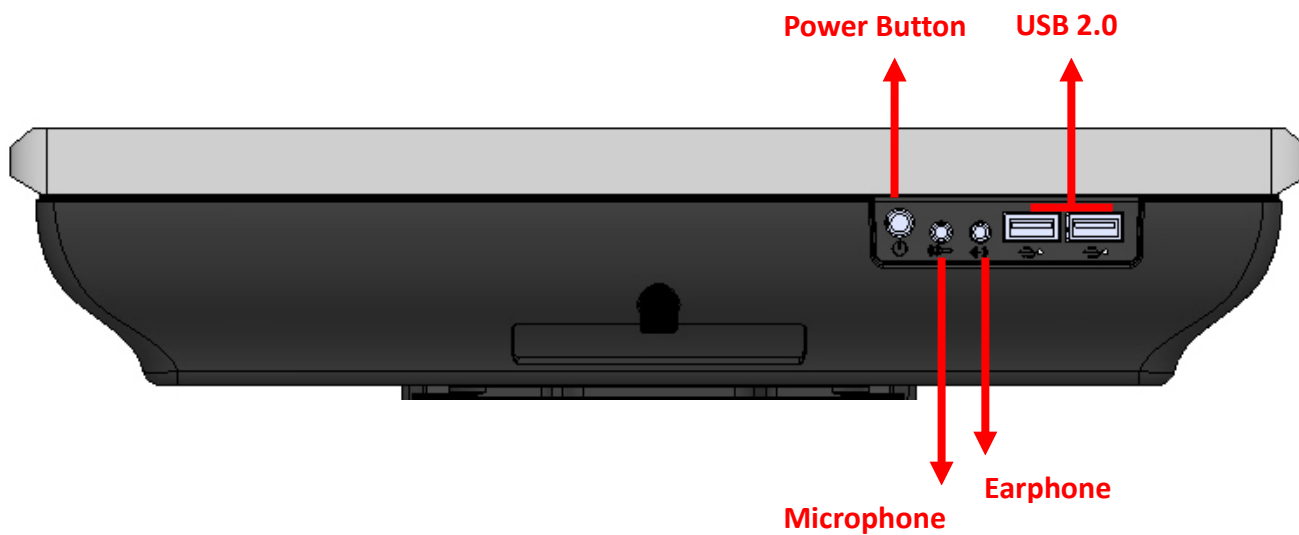


The connector panel

1. TOP of machine



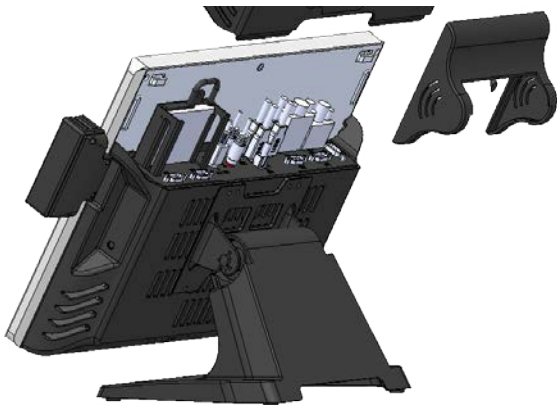
2. Bottom of machine



Please unplug the AC power of the adapter before opening any part of the system. Since the standby power is always on after the adapter is plugged in. It may cause permanent damage to your system when you open any part of the system.

Installing Peripherals

To install the peripheral's cables, please follow the method described below. It will make the process much easier.

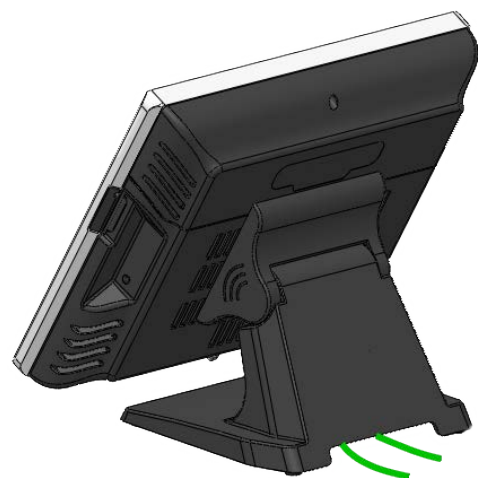
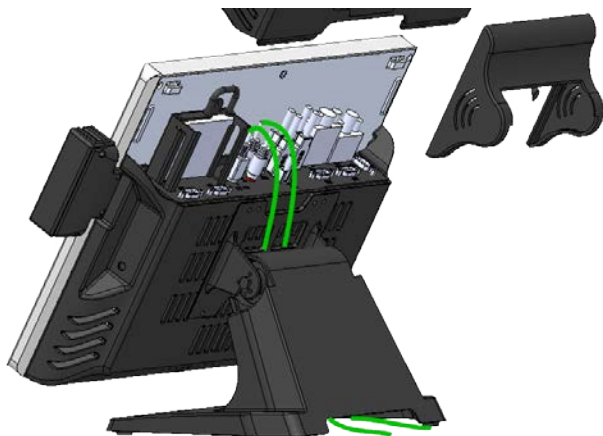


1. Open the Cable cover and Hinge cover



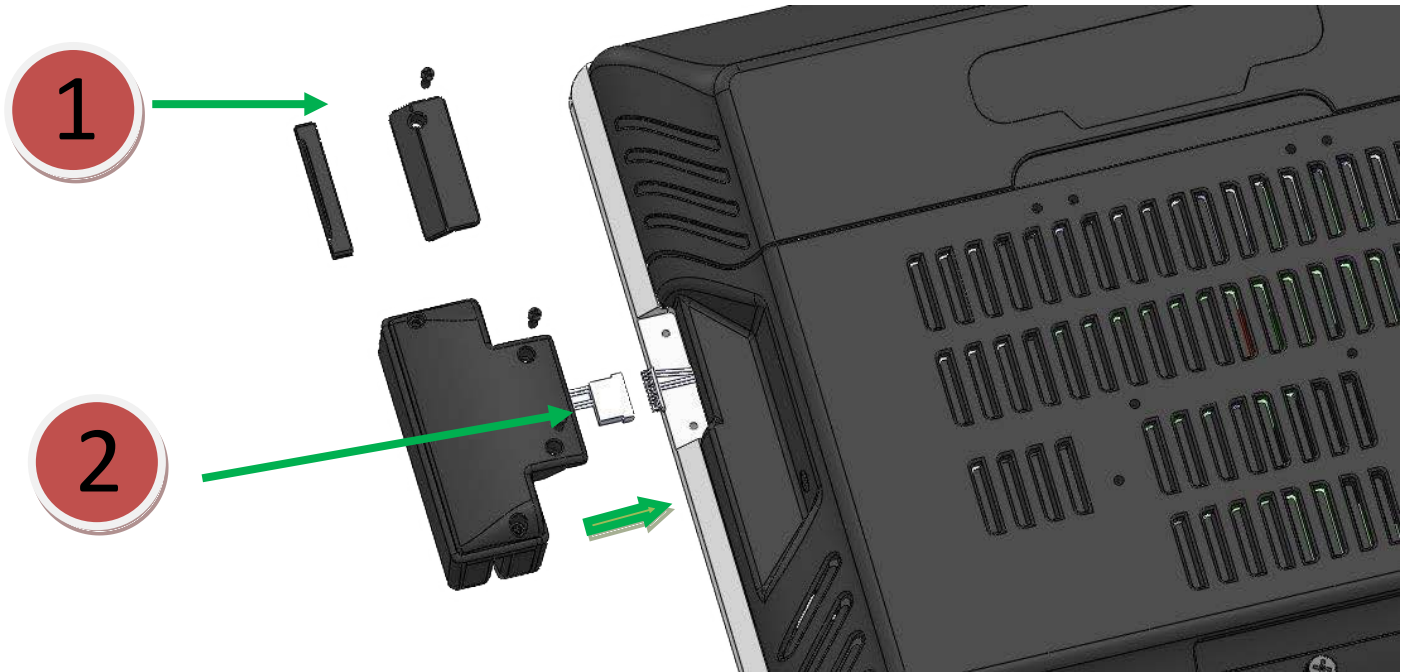
2. Follow the way of drawing to wiring

Plug in all the cable on the hosts



3. Through the cable between HOST and FOOT

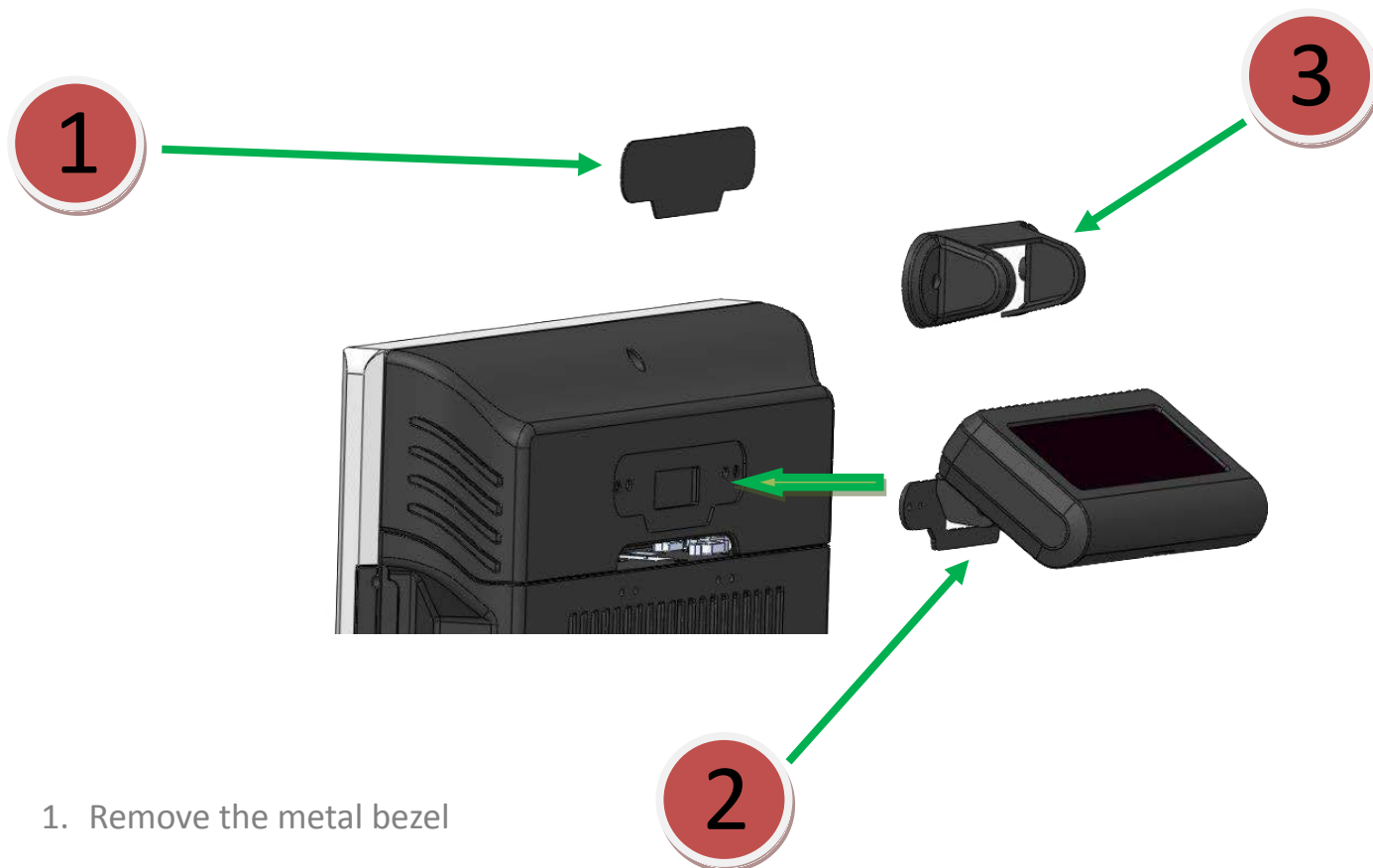
Installing Magnetic Card Reader (MSR)



1. Remove the rubber mat , Loosen the screw , and remove the MSR cover
2. Connected to the cable on the MSR and host , and lock two screws



Installing Customer Display



1. Remove the metal bezel

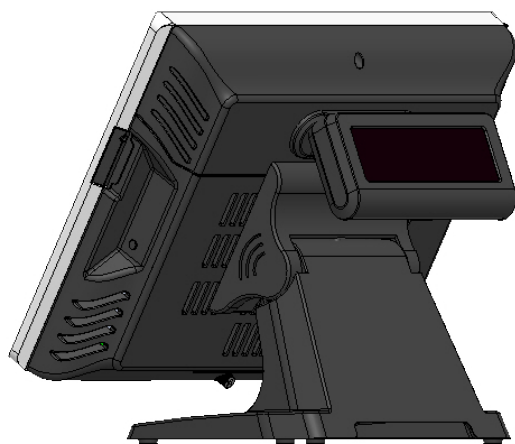
2. Connected to the cable, lock the two screws on Cable Cover

3. Installation VFD cover and lock the two screws

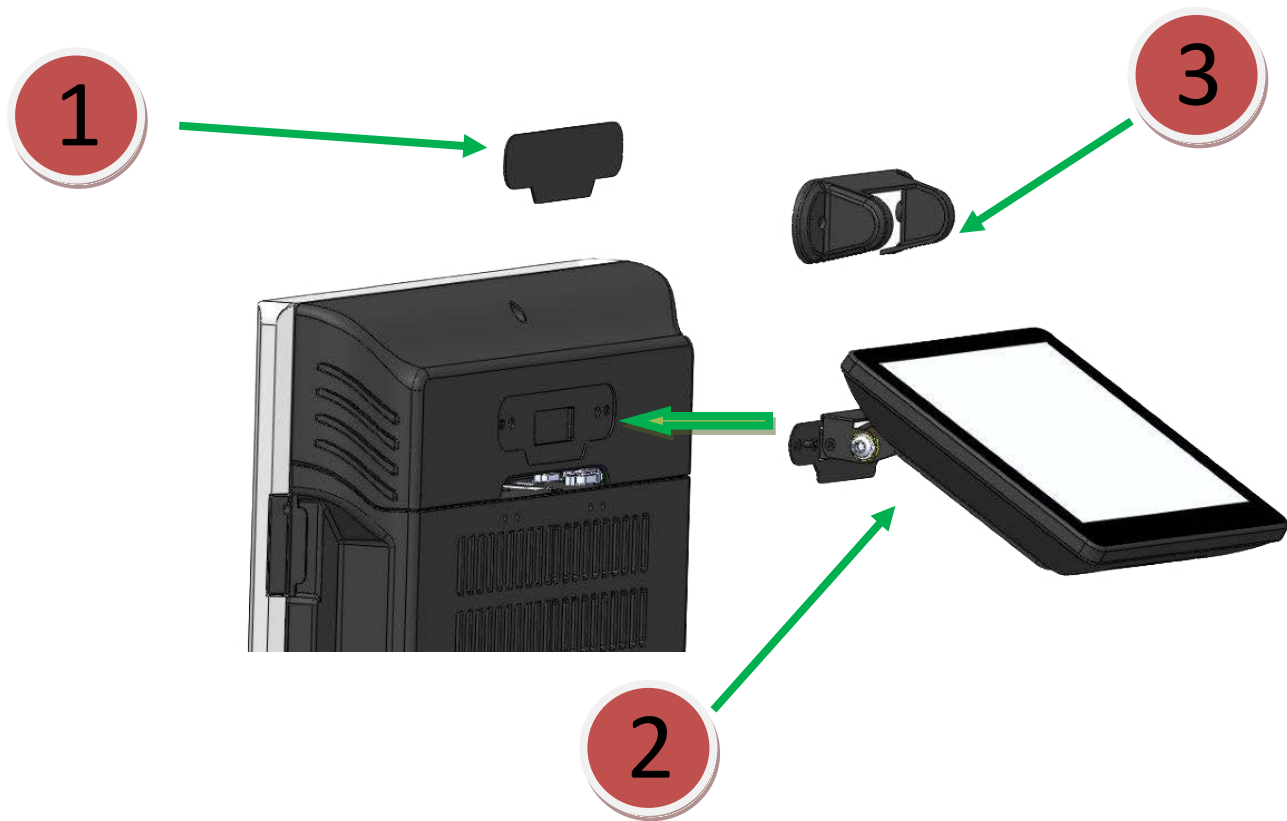
Note : Please provide VFD DC + 5V .

If you use COM3 , see Page 66 , COM4 , see Page 65

If you use COM1 , COM2 ,change UART1 and UART2 RI Function , see Page 30



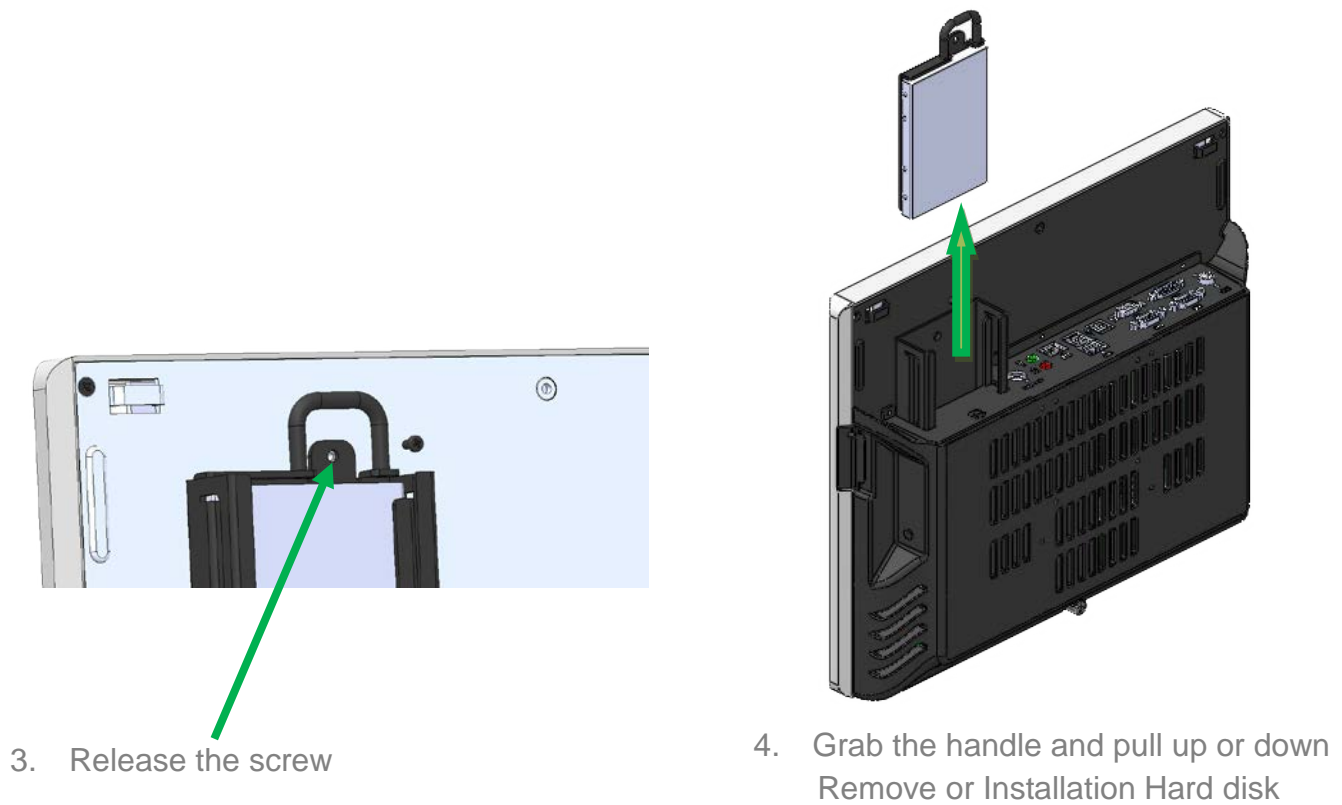
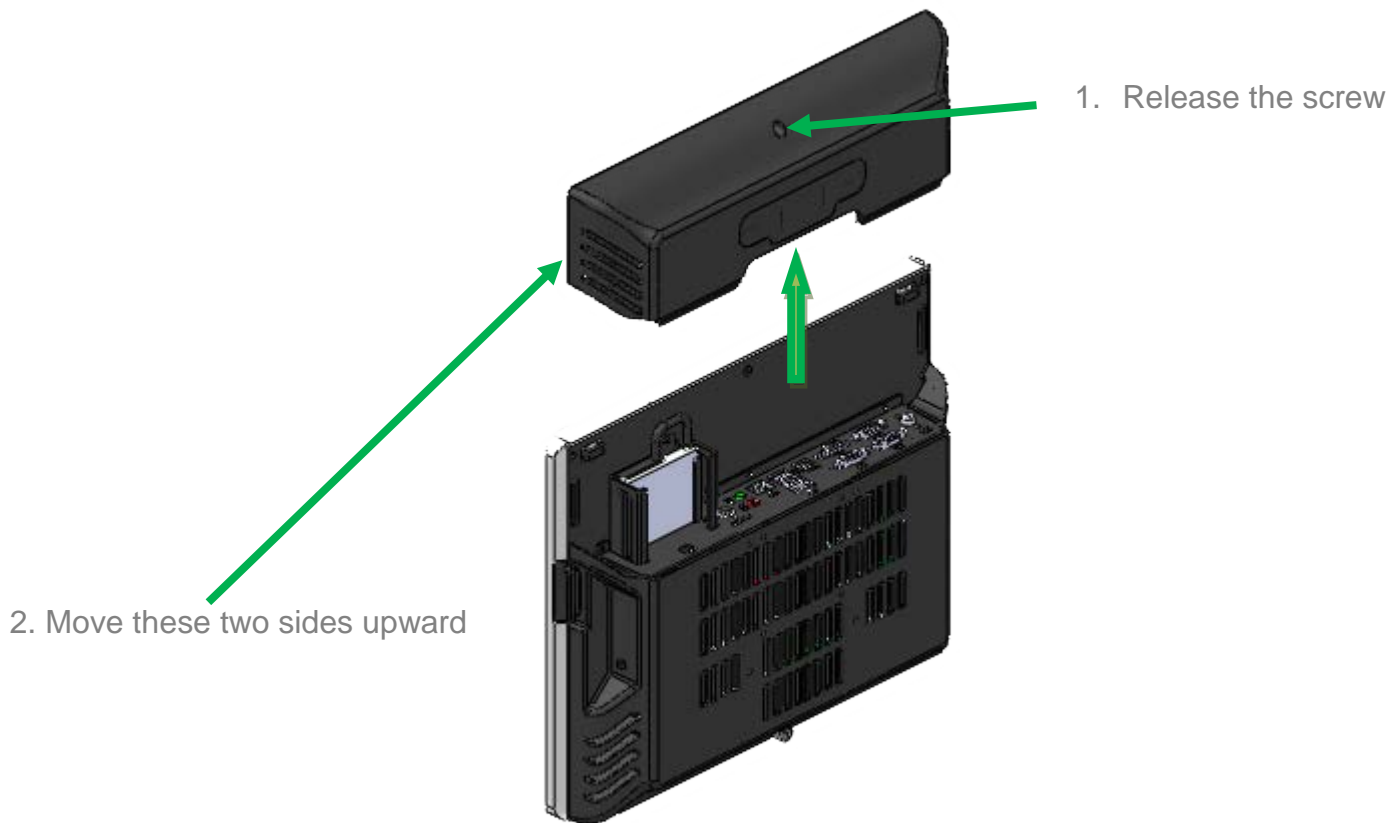
Installing Second Display



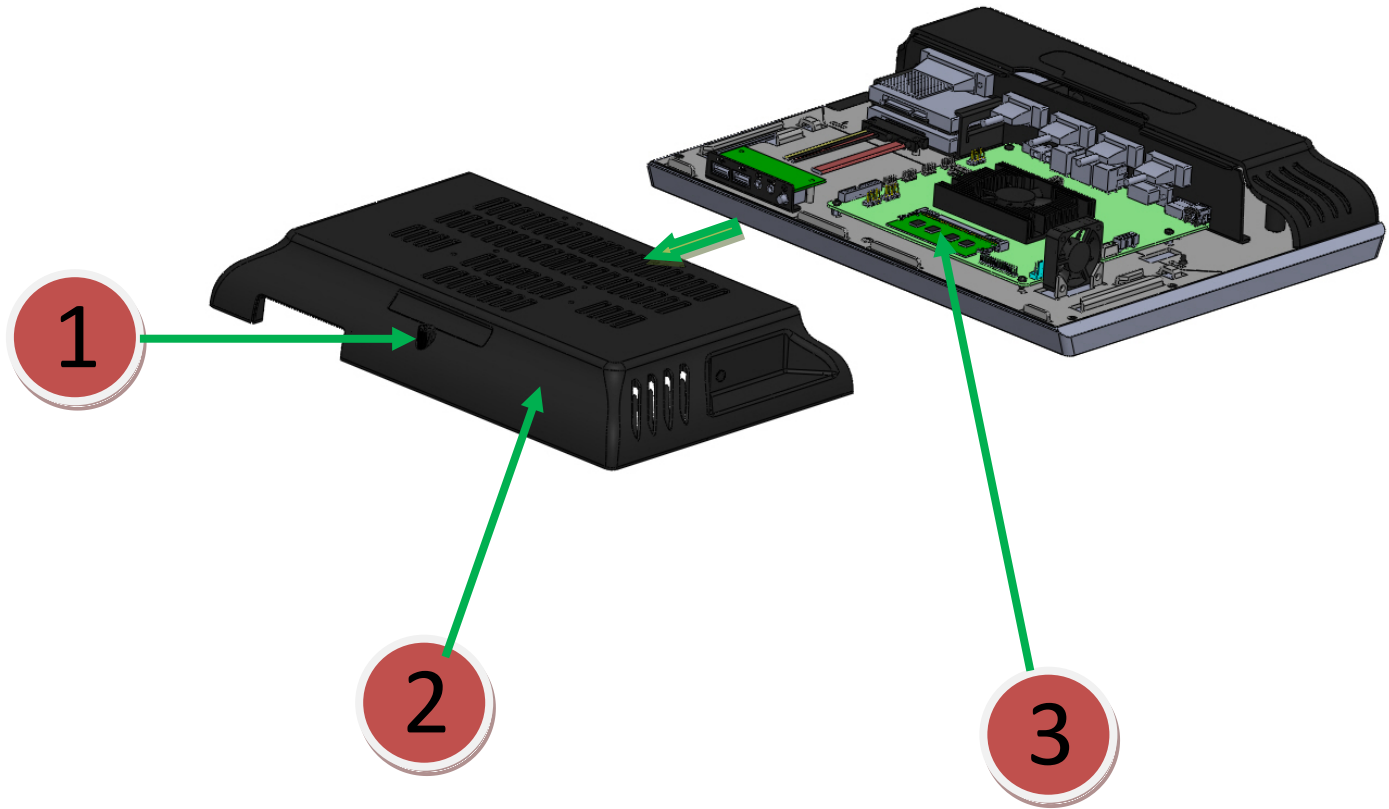
1. Remove the metal bezel
2. Connected to the cable, lock the two screws on Cable Cover
3. Installation VFD cover and lock the two screws



Replace and Installing Hard Disk

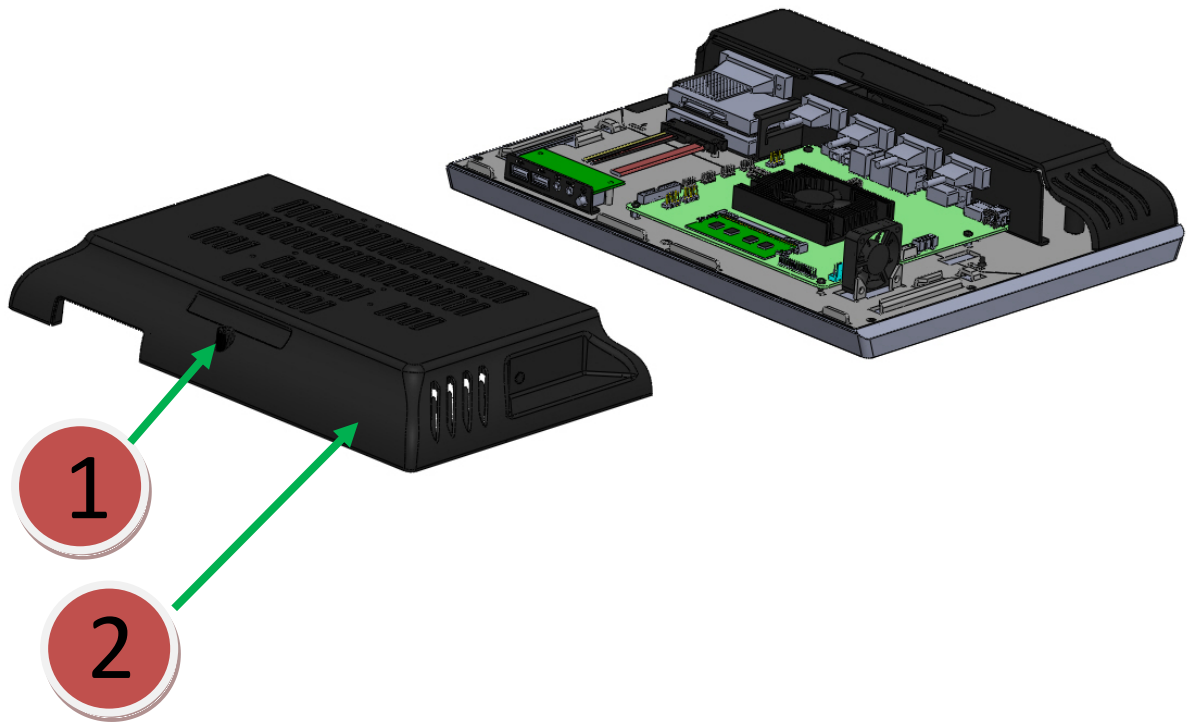


Replace and Installing Memory

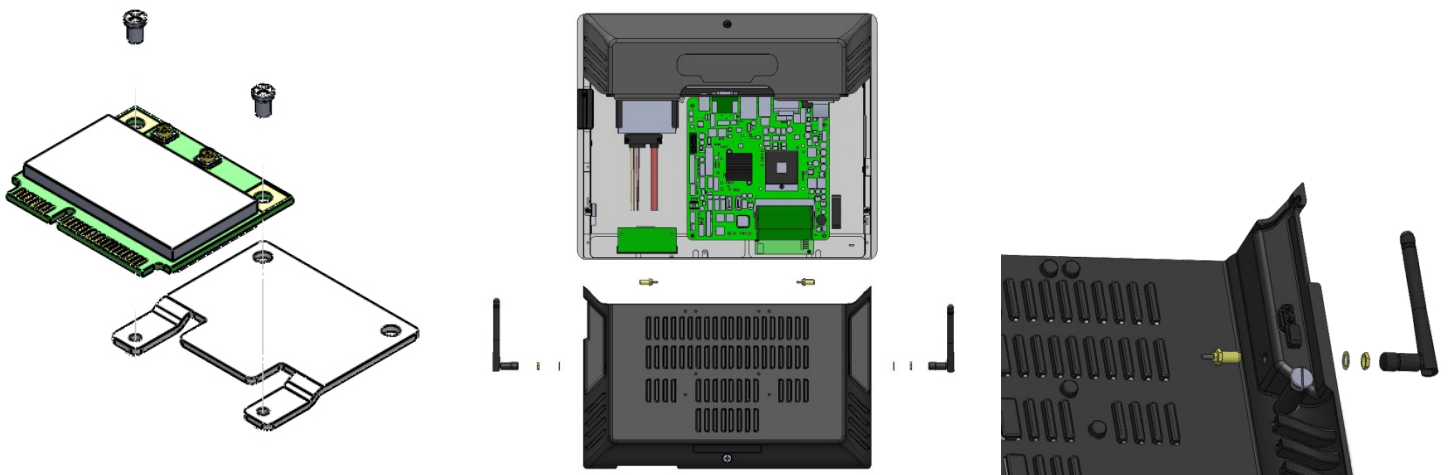


1. Release the screw
2. Grasp the both sides , and pulled down the back cover
3. Replace or Installing Memory

Installing WIFI Card and Antenna

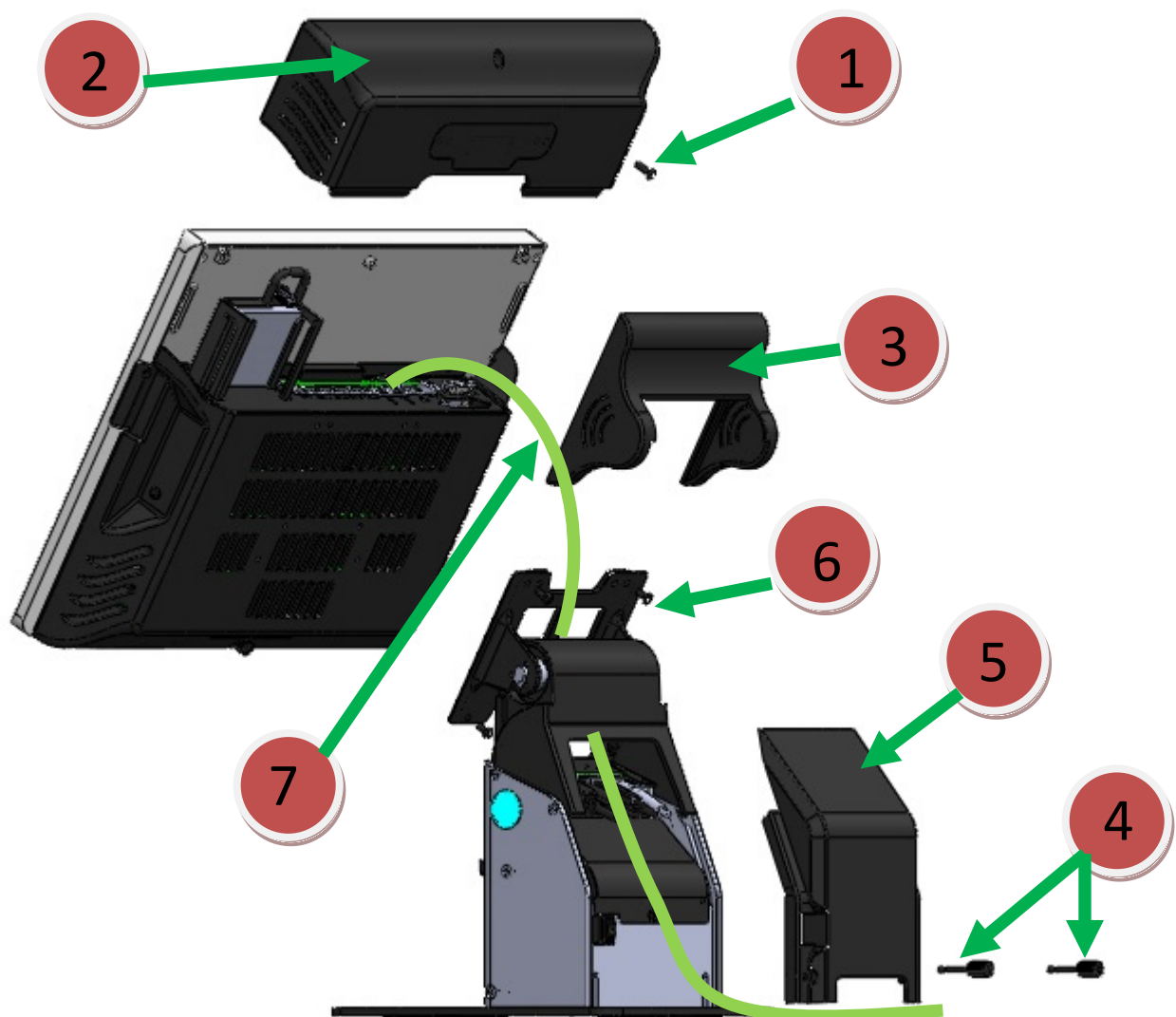


1. Release the screw
2. Grasp the both sides , and pulled down the back cover



3. Install WIFI Card
Lock 2 screws
4. Remove the plastic pad on the both sides
of the Main cover
5. Install Antenna

Installing A8V2 Printer



- 1.Release the screw of Cable Cover
- 2.Move these two sides upward
- 3.Remove the hinge cover
- 4.Release two screws
- 5.Remove the A8V cable cover
- 6.Lock the four screws on VESA hole
- 7.Through the cable between hinge and cable cover

Safety Regulatory Notices

CE MARK



This device complies with the requirements of the EEC directive 89/336/EEC with regard to “Electromagnetic compatibility” and 73/23/EEC “Low Voltage Directive”



This device complies with part 15 of the FCC rules. Operation is subject to the following two conditions:

- (1) This device may not cause harmful interference.
- (2) This device must accept any interference received, including interference that may cause undesired operation.

CAUTION ON LITHIUM BATTERIES

There is a danger of explosion if the battery is replaced incorrectly. Replace only with the same or equivalent type recommended by the manufacturer. Discard used batteries according to the manufacturer's instructions.

LEGISLATION AND WEEE SYMBOL

2002/96/EC Waste Electrical and Electronic Equipment Directive on the treatment, collection, recycling and disposal of electric and electronic devices and their components.

The crossed dustbin symbol on the device means that it should not be disposed of with other household wastes at the end of its working life. Instead, the device should be taken to the waste collection centers for activation of the treatment, collection, recycling and disposal procedure.

To prevent possible harm to the environment or human health from uncontrolled waste disposal, please separate this from other types of wastes and recycle it responsibly to promote the sustainable reuse of material resources.

Household users should contact either the retailer where they purchased this product, or their local government office, for details of where and how they can take this item for environmentally safe recycling.

Business users should contact their supplier and check the terms and conditions of the purchase contract.

This product should not be mixed with other commercial wastes for disposal.

